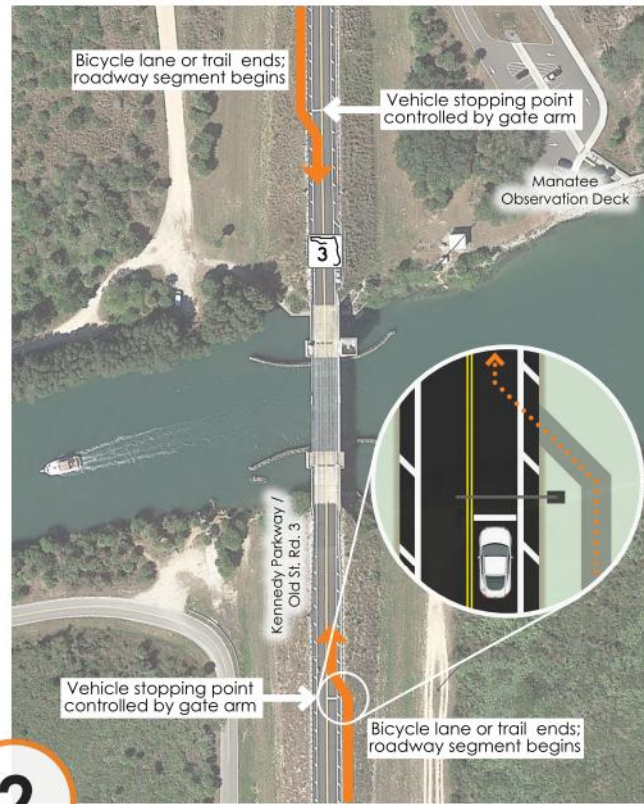


1

SHARROWS

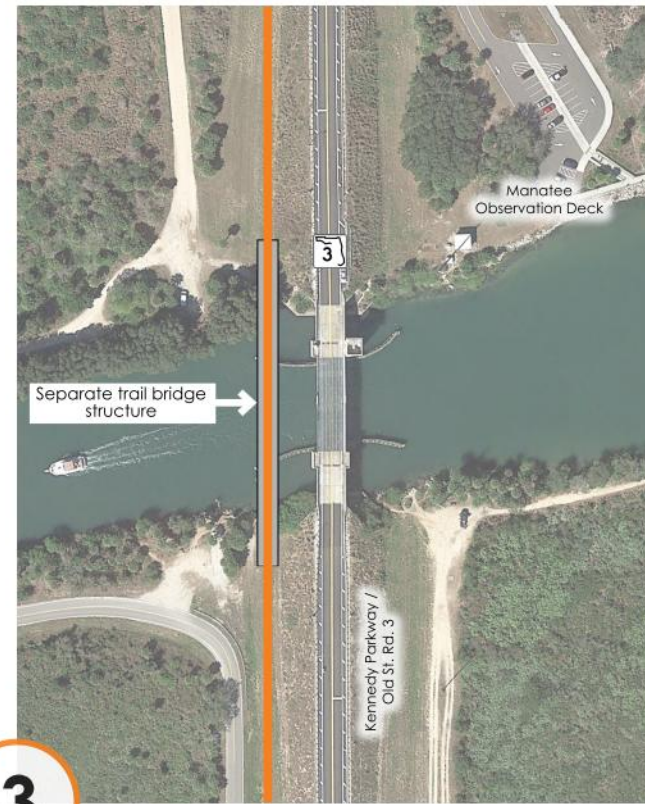
Travel lanes across bridge shared by bicyclist and cars.



2

BICYCLE CROSSING CONTROLLED BY GATE ARM

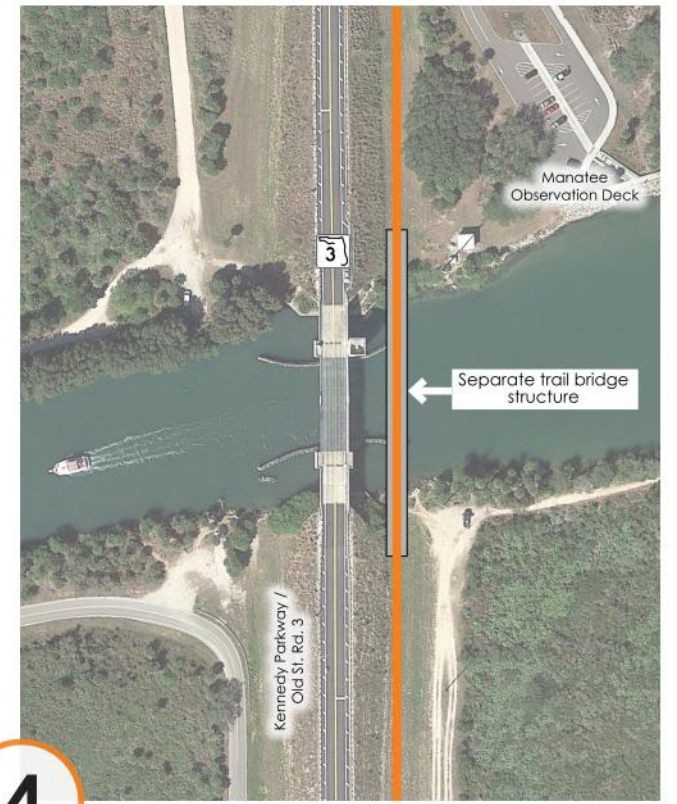
Vehicles would be stopped while bicyclist would be allowed to proceed across the bridge.



3

SEPARATE TRAIL BRIDGE (WEST SIDE)

Additional bridge structure on west side of the Haulover Canal bridge. Can be a fixed, high-level bridge or a bascule bridge.



4

SEPARATE TRAIL BRIDGE (EAST SIDE)

Additional bridge structure on east side of the Haulover Canal bridge. Can be a fixed, high level bridge or a bacule bridge.